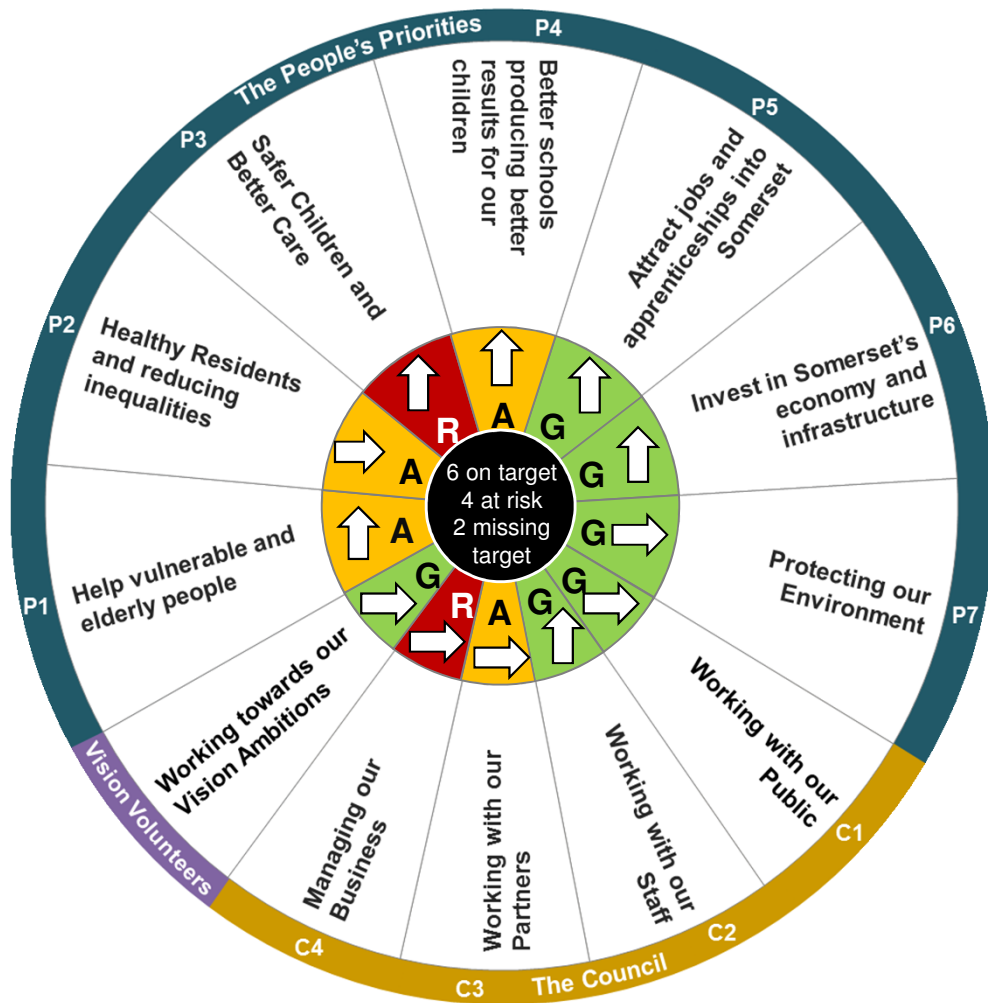


Appendix A – Corporate Performance Report
End of September 2017/18

Date of Report: 15th November 2017
 Report Forum: Cabinet



↑	Performance Improving
↓	Performance Deteriorating
→	Performance Stable
G	On target
A	At risk of missing target
R	Missing target

Issues for consideration

P3 Safer Children and Better Care - (red but improving)

The Children’s Trust Executive are pleased with the progress against the 7 Improvement Programmes, but recognise there is still much to do. Action Plans for 2017/18 are in place and Q2 performance against the CYPP will be considered by the Policies, Children and Families Scrutiny Committee on 17th November 2017. Ofsted quarterly monitoring visits have concluded adequate progress is being made and DfE intervention has confirmed a “ significant improvement “ in Somerset’s Children’s Services, including more manageable case-loads, a more stable workforce and better partnership working as reported by the Minister in 2016. Despite this, until a re-inspection, services are judged inadequate and there is a corporate risk for Safeguarding Children that has a very high risk rating. Change is evident but universal improvement remains a challenge.

C4 Managing our Business – (red but stable)

The segment is red because of the Authority’s financial position but this disguises some good performance across other aspects of the County’s business. The majority of indicators under C4 in corporate and support services are green or amber but with the significance of the budget overspend reported elsewhere on the Cabinet agenda, the C4 segment has been judged as Red.

P1 Help vulnerable and elderly people – (moving from red to amber)

The Performance Improvement processes and improved use of data to support performance improvement is now being used consistently across all teams. This is in conjunction with a focused and improved use of technology. Management actions are in place for all performance targets and are being monitored closely. The implementation of the new management structure will improve and strengthen the approach further.